

Dadford and Stowe Parish Magazine

November - December 2018



Photo: Chris and Philippa Atkinson

Remembrance Day Service

10.45am 11th November 2018

Dadford Memorial and Cemetery Chapel
100 years since the end of World War One

This magazine is produced every two months for everyone in Dadford Village and Stowe Parish.

STOWE CHURCH CONTACTS

CHURCH WARDENS	John Kimpton 5 Walnut Drive, Maids Moreton MK18 1QJ reginaldkimpton@gmail.com	814456
	Kay Murray The Moors, Chackmore, Buckingham MK18 5JN murray520@btinternet.com	814742
PCC SECRETARY	Julia Morten 5 Royal Court, Chandos Road Buckingham MK18 1AL jmorten@btinternet.com	817601

Phone numbers prefixed by 01280

DEADLINE FOR THE MAGAZINE CONTRIBUTIONS

Please let Lyn East (lmeast@btinternet.com) have submissions (articles, photographs, ads or news items) by **the 15th of the month prior to publication** (February, April, June, August, October, December).

ADVERTISING

If you would like to advertise future events in this magazine please e-mail
Lyn East (lmeast@btinternet.com)

*Copyright © Stowe Parish Church. All rights reserved.
To see a colour copy of the magazine, or find out where we are,
visit our website at www.stowechurch.org.uk.*



Dear Friends,

These next two months are a time of contrast in many areas.

Firstly, autumn, the 'season of mists and mellow fruitfulness', gives way to the first real frosts, gloom and strong winds of early winter-often just after the Charter Fair and the clocks going back!

Secondly, comes the contrast between the Christmas Season, ALREADY proclaimed in the shops, and the low key event of the birth of the Lord Jesus Christ in a remote part of the Middle East - the ostensible cause of all the commercial jamboree. The former uses God's giving of his son as the excuse for a frantic, debt-fuelled orgy of extravagant giving, self-indulgence, aspiration and envy. The latter may have been greeted by angels and the Magi, but was otherwise quite unremarked.

Thirdly, there is the contrast for many people between the expectations for the day and its reality. The ideal, perhaps based on A Christmas Carol, conjures up an image of a happy time within the family, where good cheer, innocent merriment and fellowship flourish. Sadly, the opposite is the experience of many, whose loneliness is made worse by having no close family or friends with whom to enjoy the day. There are families in which latent tensions erupt even to the point of filing for divorce afterwards. Others have to cope, possibly alone, with bereavement or with the rupture of relationships, hopes and dreams.

Fourthly, notice the contrast for Jesus Christ between his intimacy with His Father and the harsh setting of His birth. He voluntarily gave up heaven to enter the time and space of our world to set us free from sin. He was born into a poor family, to a mother whose husband was not his father, in a stable of all places, after a difficult donkey ride from Nazareth to Bethlehem and his early months were spent as a refugee in Egypt. How different from the sentimental Christmas Card pictures of baby Jesus! What a reversal of roles and status was that!



So how can we redirect our focus so that we can remedy the three contrasts above and accept that, as the badge says, "Jesus is the reason for the season"?

Advent is the time when we can prepare to celebrate Christmas properly. The name comes from the occasion (Adventus) when the Roman Emperor would visit the various regions and outposts of the empire for fact-finding, improvement and encouragement. Beforehand, as in the General's Inspection in the British Army, everything would be cleaned up and become fighting efficient - "if it moves, salute it, if it does not, paint it white" was the motto when I did my National Service!

We, therefore, should make time to take stock of our life, our progress in following Jesus and our hopes and fears. Then, we can reflect on the meaning and message of Jesus' birth and celebrate his gift of forgiveness and friendship. After all, the angels sang "peace, goodwill towards men", when God himself came to earth in Jesus to cope with all the trials and joys of human existence.

How amazing and extraordinary is that!

Have a blessed Christmas and Happy New Year.

Andrew

There will be an Advent Bible Study for 3 weeks in December. It will take place at 7.30 on a Monday. The dates will be the 3rd, 10th and 17th December. The title will be 'Preparing ourselves for Christmas'.

***ALL** are welcome and Delta and Lantern will not meet during December. The venue will be announced in the weekly Newsletter nearer the time.*



Parish Council Update

Just saying ... Support your parish council. There's a lot to be thankful for.

Dadford village hall. A fine amenity with very reasonable hire rates. Managed by committee reps from Stowe Parish Council, Stowe Parochial Church Council and Dadford WI. Bookings: Councillor Sue Boulet, sueboulet@btinternet.com

BART community bus (Buckingham Area Rural Transport). A 16-seater, accessible to users of wheelchairs, walkers, scooters. Bookings: project coordinator Ashley Waite, ashley@fundra.co.uk

Red phone box. A landmark in the middle of Stowe Parish. Bought by Stowe Parish Council in 2017 with parish funds and donations from people in the community.

Public access defibrillator located in the middle of Dadford village opposite the red phone box.

Voneus superfast broadband. On its way. <https://www.voneus.com/updates/> or contact chief executive, Steve Leighton, steve.leighton@voneus.com

Silverstone Park MEPC. Traffic calming scheme through Dadford linked to the development section 106 fund. Contact commercial director Roz Bird, rbird@mepc.com

Silverstone Circuit, home of British motor racing. Watch this space: following talks during the 2018 season, an innovative comms working group is to be established in November by Silverstone Circuit B2B Brand Manager Rebecca Tarla and Stowe Parish Council Chair Christine Considine. For other regular updates on the circuit and the community, see residents' page of the circuit's website, <https://www.silverstone.co.uk/about/local-community/>

Dadford allotments. Would you like one? Contact Councillor Chris Atkinson, chrisatkinson565@btinternet.com

DADFORD TREE LIGHTS SWITCH ON

Please join us for singing, mulled wine & mince pies with Buckingham Ukulele Group

Sunday 2nd December, 18.00 - 20.00

Dadford Village Hall (under cover if wet!)

Stowe Parish Council

Free * Everyone welcome

Stowe Parish Council social events. Come along to the Xmas tree lights switch-on with mulled wine, mince pies, singing and Buckingham Ukulele Group, Sunday 2 December, Dadford Village Hall, 6.00pm - 8.00pm

Street lights. Stowe Parish looks after 15 of these. Any concerns, contact clerk to the council Tony Skeggs,
parishclerkstowe@outlook.com

Stowe Parish Council audits, budgets, precepts. Contact clerk to the council Tony Skeggs,
parishclerkstowe@outlook.com

Councillors: Chris Atkinson, Jamie Boulet, Sue Boulet (Vice-Chair), Christine Considine (Chair), Ian Watkins, Steve Williamson, John Windley.

Next Stowe Parish Council meeting
Wednesday 14 November 2018
Dadford Village Hall, 19.30

Clerk: Tony Skeggs,
parishclerkstowe@outlook.com

PCC Meeting with North Bucks Parish

All churches in the Church of England must have a Priest-in-charge. Since Rev Sue Sampson left last year we have been without a one so the Rev Val Plumb has been acting as ours. During that time the Diocese has been seeking the way forward for us to have a new Priest-in-charge. Initially, several possible ways forward were discussed but the Diocese has now made it clear that there is only one possible outcome and that is for Rev Hans Taling to be Priest-in-Charge of the Parish of Stowe and Dadford as well as having his role as Rector for North Bucks Parish.

On the evening of Friday 5th October Stowe Parish Church PCC had an informal meeting with Rev Taling and members of his staff team from the North Bucks Parish, plus Rev Val Plumb (Area Dean for Rural Mission and Development). It had been arranged to give an opportunity for us to meet informally and to ask questions about what it would mean for us as a church to have Hans as ‘Priest in Charge.’

It was a friendly, useful and beneficial meeting for both parties. Hans confirmed that we would remain an independent parish with him as Priest in Charge.

Rev Val Plumb explained that the process of joining North Bucks Parish is on-going and has to go through several stages until can be officially put in place, which could take six months to a year. This process is the way the Church of England is dealing with the reshuffle of many parishes in the Deanery of which we are a part.

It is envisaged that joining with North Bucks Parish will not make a great deal of difference to the way that Stowe Parish Church runs at present.

From your Church Wardens John Kimpton and Kay Murray



National Trust Stowe

National
Trust

We can't quite believe we're looking ahead towards Christmas. After being treated by an exceedingly long summer, autumn has surprised us with bright colours (considering the stress on trees brought about by the drought). As the leaves fall, frost-kissed days are on the way where there'll be plenty of warmth and chatter to be had at the New Inn and crisp refreshing walks to work off the indulgent treats we all love over the festive season.

Lovingly local - Christmas at Stowe

Seeking an escape from the hustle and bustle of shopping centres? Discover a variety of local stallholders selling lovingly homemade and traditional homeware, art, jewellery, tasty treats and gifts. Between 12 November and 16 December, drop in to the historic Parlour Rooms at the New Inn to browse at your leisure. There will



be plenty of variety throughout the season as stallholders switch every few days. It's a great excuse to make a coffee catch-up date with friends in the café and enjoy some relaxed shopping and the best bit is it's free of charge to enter the event and the New Inn visitor centre.

Natural Pampering will be showcasing their products at the shopping season.

If slaving away over the roasting tin basting and cleaning the dishes fills you with dread, the chefs in the Nevillery café will rustle you up a special treat. **Christmas lunches are now open for booking**, with a tempting menu of two or three courses to choose from followed by tea or coffee. *Available Monday-Friday from 3-21 December, 12noon-4pm.*

To make a booking contact Beverley Tyrrell on 01280 817156 or beverley.tyrrell@nationaltrust.org.uk. To see the full menu, take a look on the website nationaltrust.org.uk/Stowe. £20 two courses, £25 three courses.

Embrace the season and discover all 24 'doors' hidden in the landscape for an advent calendar on a monumental scale. Available daily, grab a map from the welcome area and head out on a chilly walk. Some of the advent doors have been created in partnership with the local community including Buckingham Primary School, Men in Sheds of Buckingham, Stowe House Preservation Trust, MK JETS and Stowe Parish Church to name a few.



Restoration work

We continue to make progress with 'Restoring Stowe - the Landscape Programme' gradually completing a series of 54 different tasks to help return the garden back to its glory days. Most recently, we've removed two structures both of which were modern interventions in the landscape and redundant of use for many years. If you've seen the work taking place you'll know where we're talking about - if not and you visit us soon, you'll forget they were ever there! Of course we're referring to the Pump House and Rifle Range. Working alongside our building surveyor and archaeologist, the gardens team are now in the process of tidying and re-planting these areas to how they would have looked historically. For more info on the projects and history visit the website www.nationaltrust.org.uk/Stowe



The Pump House before and after demolition
©National Trust Images

STOWE STARS

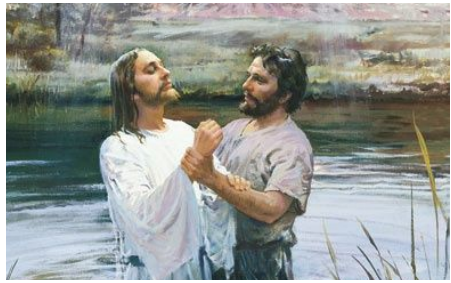
FAMILY SERVICES

18th November

Tales from the Riverbank
The Baptism of Jesus
Mark 1, 1-11

Why did so many people leave their towns and villages and even the city of Jerusalem to meet at one spot on the banks of the River Jordan? To hear the stern message of a man called John: "Turn away from your sins because the Kingdom of heaven is near. Be baptised and God will forgive your sins." To show that they were sorry for all the wrong things they had done the people entered the water to mark their sins being washed away. "I baptise you with water to show that you have repented but Someone with greater power and authority than me will baptise you with the Holy Spirit."

Not long afterwards John was surprised to see Jesus coming up to him with the express purpose of being baptised. "I ought to be baptised by You and yet You have come to me," said John. "This is God's will," said Jesus and went down into the water. When He came out He saw the heaven opening and the Spirit coming down like a dove and heard a voice saying, "You are my own dear Son. I am pleased with You."



Water is always used in baptism services. It is a symbol of cleansing away the old and beginning the new God-centred life. When we are sorry for the wrong things we do we know we will be forgiven through God's love and grace.

The children will present the Christmas story during the service on 16th December.

Please bring your children to the rehearsal on Friday 14th December in church at 5pm.

16th December

About 30 years earlier
Matthew 1, 18-24

Joseph was a carpenter in Nazareth and engaged to Mary. He was shocked to learn that she was going to have a baby and, being a kindly man, did not want to bring public disgrace on her so planned to break off the engagement quietly. Then he had a surprising dream: an angel came to him with a message from God - He was to marry Mary and, after the baby was born, he was to call Him Jesus "because He will save His people from their sins."

At Christmas we celebrate Mary's obedience to God's will and Joseph's trust in God and rejoice that our Saviour Jesus was born.

GM

Congratulations to Alistair Jay and Holly Wheeler who were married on 8th September in Stowe Church.

Church News

There will be a Remembrance Service in Dadford Cemetery on **Sunday 11th November** at 10.45 following the service in Stowe Church. It will mark 100 years since the end of WW1.

Christmas Services:

16th December 9.45am

Christmas Nativity service

19th December 7.00pm

Carol Service with mulled wine and mince pies

24th December 3.30pm

Carols in Dadford Village Hall

24th December 11.30pm

Midnight Communion

25th December 9.45am

Family Communion

Best wishes to *Grace Elizabeth Hilsdon*, daughter of Philip and Shelley, and to *Aurelie Lennard*, (below) baby daughter of Jonathan and Laura, granddaughter of Lorraine and David Hayhurst-France, who were baptised recently.



Harvest Lunch at Stowe Church

A big thank you to Loreen, Hilary and Pete for all their hard work for a most enjoyable Harvest lunch.

Everything had been beautifully and lovingly prepared and a good time was enjoyed by all who came; good food, good atmosphere and good company.

A brilliant sum of £445.22 was raised for Stowe Church funds.

Many thanks to Pat, Julia and all those who donated cakes in support of the Archdeaconry tent at the Bucks County Show. It was a wonderful effort and many tired and hungry people were grateful for free refreshments and a friendly chat.

Thanks to Kay and all those who helped at the **Children's Light Party** in Dadford Village Hall on 31st October

The Church Website: There are details of all services and a colour version of this magazine on the Church website:
www.stowechurch.org.uk



Heat, crowds, worship, friends!



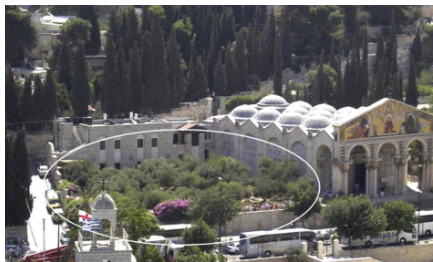
A couple of lines in the Buckingham Parish Newsletter announced that Canon Rupert Bursell was offering to lead a Pilgrimage to the Holy Land, no age limit, just a wish to go to the land where Jesus lived. So with sunhat, suncream, sun umbrella, passport, shekels, Flipstick and trust in Rupert's leadership 23 of us set off.

The travel company, McCabe's, is a Christian company which supports the Jeel al Amal Boys' Home and Co-ed School and the Bethlehem Rehabilitation Centre with which we were very impressed on our visits.

In Jerusalem our hotel overlooked the city walls near Herod's Gate and was within walking distance of St George's Cathedral where we attended the Sunday service.

The Mount of Olives is a high hill opposite Jerusalem. The opposite slope was so dazzlingly white with limestone tombs that my photochromic glasses could hardly cope. A steep, narrow lane leads down the Mount of Olives, so steep that I had to hold on to the handrail all the way down. This might have been Jesus' route on Palm Sunday when " many people spread their cloaks on the road while others cut branches in the fields and spread them on the road." Was it to prevent the donkey from stumbling?

At the bottom of the hill was the **Garden of Gethsemane**, a dry wall enclosure with olive trees said to have survived since Jesus' time. Here was the Dominus Flevit Chapel marking where Jesus wept over Jerusalem (Luke 19, 41).



The **Church of All Nations**, also known as the Church or Basilica of the Agony, is a Roman Catholic church located on the Mount of Olives in Jerusalem, next to the Garden of Gethsemane. It enshrines a section of bedrock where Jesus is said to have prayed before his arrest.

All the places where Jesus walked and talked had churches built on their supposed sites, lovely buildings in beautifully kept grounds and crowded with people from many parts of the world, each group led by a guide and all the languages mingled together, tourists and Christians eager to follow the Bible story.

We drove through the Judean wilderness all dry and brown to below sea-level to the Dead Sea, temp. 37.5C, where some of us sat in the salty water. Hotter still was the top of Masada, a rock plateau where Herod had a lofty retreat. How did they carry all the building materials up the single track Snake Path on a steep cliff face? We had a cable car. How had the Maccabees resisted the Romans for so long in the second century BC? It was a place to fill us with admiration and sadness. What did impress us was the management of water both here and at Qumran: rainwater was channelled into huge cisterns in the rock, the Nazarenes at Qumran able to bathe daily in running water according to their rules. How did Jesus and His friends walk long distances between villages and towns in this desert without watering places?



A particular joy was the opportunity to read or sing or hold a Eucharist service. In Ein Karem where Zechariah and Elizabeth lived, the words of Zechariah on the birth of his son John were on the wall where we sat in the shade and we listened to them. In the cave where the shepherds might have sheltered with their sheep we found benches carved from the stone and a table with bread and wine ready for Rupert and the Rev Ron Bundock to share Communion with us. Four poles, a tin roof and wooden benches were all we needed to share the Eucharist by the Sea of Galilee. It was a world-wide celebration of Jesus' life and it was Jesus who brought us all together.

Our guide was a Palestinian who knew all the references in the Bible and the facts about the places but his pain at the displacement of his people and the occupation of the land was evident. We caught glimpses of the Wall which separates two people who find reconciliation hard.

I think we came nearest to the authentic Jesus when we crossed "the Syrian sea" in an open boat and heard the waves slapping against the sides. Surely Jesus heard that sound and felt that wind? GM

What's been happening at St. James and St. John Church of England Primary School...



The October break marks the end of our first half term of the school year and it seems incredible that our pupils all moved into new year groups only a few weeks ago. We are always so proud of the way the pupils we already have on roll take newcomers under their wing and help them settle in at St James and St John. If you have a child who will be starting school in September 2019 and would like to arrange a visit to the school then please do not hesitate to ring the:
School Office on 01280 860 272.

This year, the four houses that the children throughout the school are divided into have been renamed after familiar local landmarks; houses now go by the names of Stowe, Waddesdon, Blenheim and Warwick. Children are awarded house points for their behaviour and achievements that are then counted and totalled each week by the team representatives at both sites.

The whole school enjoyed 'Perfect Poetry Day' on the 4th October with lots of activities designed to engage and inspire the poet in each and every one of the pupils. The Akeley children came to school in their pyjamas and had the opportunity to listen to a wide range of wonderful poems as well as write some of their own. At the Chackmore site, the pupils had the task of memorizing a poem to perform and time was spent analyzing and critiquing the works they heard. The day was a huge success!

The children in Year 4 were very excited to have their bikes in school for a day earlier this month in order to take part in the Level 1 Bikeability training course. Our new after-school Dance Club is proving to be very popular with the children at Chackmore and our wonderfully productive PTFA run Gardening Club has continued this term for our green-fingered children.

Harvest Assemblies have been held at both sites and were open to family members to join in with. Those attending thoroughly enjoyed the songs, poems and stories that were performed. A generous amount of food donations were received for the Milton Keynes Food Bank – thank you to everyone who donated.

The children have been demonstrating their creativity through the production of artwork for the Christmas card project that will generate funds to go to the PTFA. The PTFA is also holding a competition for designs for a school calendar; winners are yet to be announced but I have a feeling choosing the images to accompany each month's page is going to be a tough job!

It won't be long until the annual Christmas Market and we look forward to seeing you there. Attend if you are able and enjoy the range of present ideas on offer as well as refreshments and the opportunity to win on the raffle!

Upcoming date for the diary:

St. James and St. John Christmas Market:

Saturday 17th November, 12noon to 3pm, Akeley Village Hall



**National
Trust**

Events Listings

NAA=Normal admission applies

B = Booking essential 0344 249 1895

Available daily

Family explorer activities

Nov: Wild art

Dec: Landscape advent calendar

Free NAA

Sat 3 Nov, 10.30am-1pm

Get together with our team to litter pick Stowe Avenue, the one and a half mile long trail that leads towards the garden from the town of Buckingham.

Free

Tue 6 Nov, 4 Dec 10.30am-12.00noon

Toddler Tuesdays

Play, sing songs, hear stories and make toddler crafts in a child-friendly environment.

Free

Mon 12 Nov - Fri 14 Dec 10am-4pm

Christmas shopping season

Throughout the season you'll find a select group of stallholders in our atmospheric Parlour Rooms selling homemade and traditional products. Make shopping a leisure-time treat with a catch up over coffee with a friend before browsing our shop for Christmas gifts.

Free

Wed 21 Nov, 19 Dec 10.30am-12.30pm

Man's best friend monthly dog walks

Join the dogs of Stowe on a paw patrol with a different theme and leader each month.

Free NAA

Sat 01 Dec - Fri 04 Jan 2019 10am-4pm

Landscape advent calendar

Head out on a winter quest along our cryptic trail to discover all 24 'doors' hidden in the landscape for our advent calendar on a monumental scale.

Free NAA

Weekends 01-02, 08 - 09, 15-16 Dec 10am-4pm

Carols in the courtyard

NAA

Wed 26 Dec – Sun 06 Jan 10am-4pm

Boxing Day and New Year's

Escape for fresh winter walks and crisp air in the garden. You may even spot an early 'Stowedrop' or two! Warming winter treats in the café await you on return.

NAA



DADFORD WI

September and October

In September we gave a warm welcome to Elizabeth Webster, ambassador for the WI's very own college; Denman College in Oxfordshire.

We learned the history of Marcham House formerly a family home and well looked after by the Air Ministry in war time. The house was purchased by the WI in 1947 for a cost of £16,000 including 100 acres of land. Every WI gave £10 to start funding for the purchase and alterations and it opened on 24th September, 1948.

Over the years changes have been made, some land sold to raise money for maintenance but still retaining 17 acres of lovely gardens. Eighty students can be accommodated at any one time in federation themed rooms. It was called Denman after Lady Denman who was the first lady chair who held her post for 30 years. It now offers over 650 different courses and welcomes over 10,000 students a year who visit for a few hours, learn for a day, enjoy the overnight experience, or stay for weekends.

What an asset for us, enjoyed by so many over the years, taking courses on the three main themes of cookery, craft and lifestyle with everything from gin tasting, car maintenance to silver leaf jewellery. Long may it continue.



In October we were delighted to welcome fellow member Philippa Atkinson who came to explain more about 'The Lives Beneath our Feet', a fascinating document, with so much history attached.

Philippa, along with husband Chris, spent many a sunny afternoon at the cemetery in Dadford researching the gravestones of many locals. The ground was given by the Duke of Buckingham in 1883 and initial research by the intrepid duo started in 2000 but for different reasons was not completed until 10 years later. But what a priceless document to record so many stories and lives! One of the families researched was the Hawkins family and Flo was a founder member of this institute.

We were privileged to see many amazing photographs of local residents, along with 'then and now' photos of many houses in the village. We also looked at a map, showing all the local farms and a photo of the oldest house in the village, situated on the corner of the turning into High Street. Philippa and Chris are currently working on the churchyard at Stowe Church and we can't wait to hear more of the 'The Lives Beneath our Feet' from that area. Many congratulations and thanks for a superb insight into our village history, please don't stop.

THE LIVES BENEATH OUR FEET

THE LIVES BENEATH OUR FEET

INDIVIDUALS & FAMILIES IN
DADFORD CEMETERY



On the **8th November** will be our *Annual Meeting* and members will be taking things in their own hands and organising our own entertainment. On the **13th December** members will have our Christmas meeting, further details to follow. So it only leaves me one more thing to wish you all a very happy Christmas and a safe and healthy New Year and don't forget to pick up a new programme for 2019 and come along and join in the fun.

See you soon
Loren.



Budapest Café are back at Stowe!

Friday 16 November
7.30pm



Box Office: 01280 825710
Stowe Buckingham MK18 5EH

thearts@stowe.co.uk
www.artsatstowe.co.uk

arts Stowe





Nature Notes

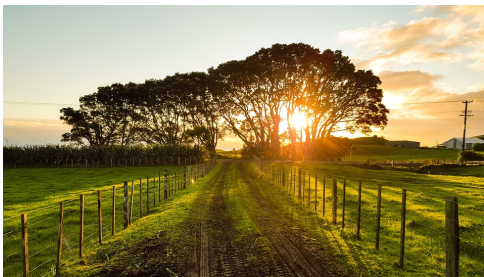
It was interesting to read in the last edition of John and Diana's work to encourage wildlife on their farm and I shall enjoy walking in winter by their

second field which is planted with likely food supplies to spot birds taking advantage of their food. We had been wondering who had been keeping our hostas from their frequently lacy leaves this year - thrushes no doubt judging by the empty snail shells on paths and paving, when we recently spotted three mistle thrushes. How did we know they were not the common thrush? The fact that there were three together - small family groups are a defining characteristic - but they are also bigger and more upright and the markings on their chests are darker and more clearly defined than the song thrush. The mistle thrush is sometimes known as the storm cock because windy weather will not deter it from singing and that call often is made in its defence of a food source that it seizes for its own or its own group for the coming winter. It is equally pugnacious in defence of its young. The Welsh name is pen y llwyn, the master of the coppice. A collective name for thrushes is a mutation. I wonder why?



Preparations in the garden are nearly complete for the winter. All the pots had the top two or three inches of compost removed and replaced with fresh. The tree lilies did not grow so high this year, although they were watered. I took all the compost out and found that the bulbs were smaller than when they were put in three years ago so I added bulb starter beneath them and completely fresh compost. We shall see! The other lilies had bulb starter added to the fresh inches of compost. The crocus corms in other pots being in the top three inches were easily examinable and I found that a lot were no longer single corms within the papery husks but four or five tiny ones. These I have put into 'nursery' pots and put to one side because we will not get full size flowers in Spring. In fact, I may cut off the flowering spikes when they appear so that no energy will be diverted from increasing the size of the baby corms.

One of our standard roses (a variety called Graham Thomas) would like to be a climbing rose - it produces long straggly stems, and this excess growth puts a strain on the stems in windy weather. We managed to cut back the wayward growth before the winds towards middle of October could cause the plants to rock. New growth on the climbing roses was tied in on the climbing roses but the work on Compassion was not complete and that part was blown down. Never mind, the heavy rain which accompanied the wind means that when we spread the manure round the base of the plants but not touching the shoots which it might rot, moisture will be locked in.



Our kitchen has a big window facing west. In the week before the storm we were transfixed by sunsets of scarlet, purple, salmon, turquoise. Perhaps sunsets such as these give us a glimpse of God's glory.

GG

Cranberry shorties

125g butter
50g light brown sugar
125g self raising flour
75g chopped dried cranberries

Cream butter with light brown sugar. Stir in flour and chopped dried cranberries to form a firm paste.

Shape into walnut size balls and place on a lightly greased tray leaving 1" between.

Press down gently with a fork and bake for 10 minutes in a pre-heated oven at 190C/gas 5.

